

Myeloid Malignancy Testing Algorithms

The algorithms for testing depend on what the initial clinical finding is that is prompting testing and the clinician's suspicion level that the patient may have a myeloid malignancy.

If the patient has blasts on white blood cell count differential and the clinician is suspicious of acute myeloid leukemia, then go [here](#).

If the patient has cytopenia and the clinician is suspicious of myelodysplastic syndrome (MDS), then go [here](#).

If the patient has cytosis and the clinician has:

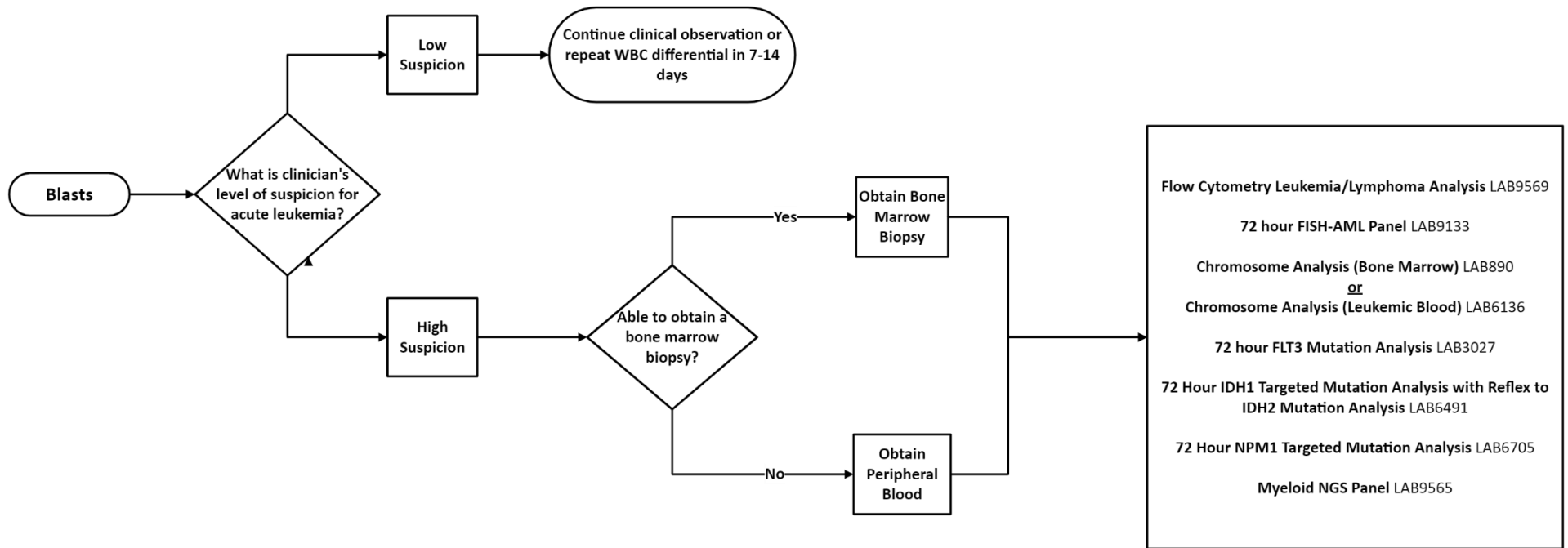
Low suspicion of myeloproliferative disease (MPN), then go [here](#).

Moderate suspicion of myeloproliferative disease (MPN), then go [here](#).

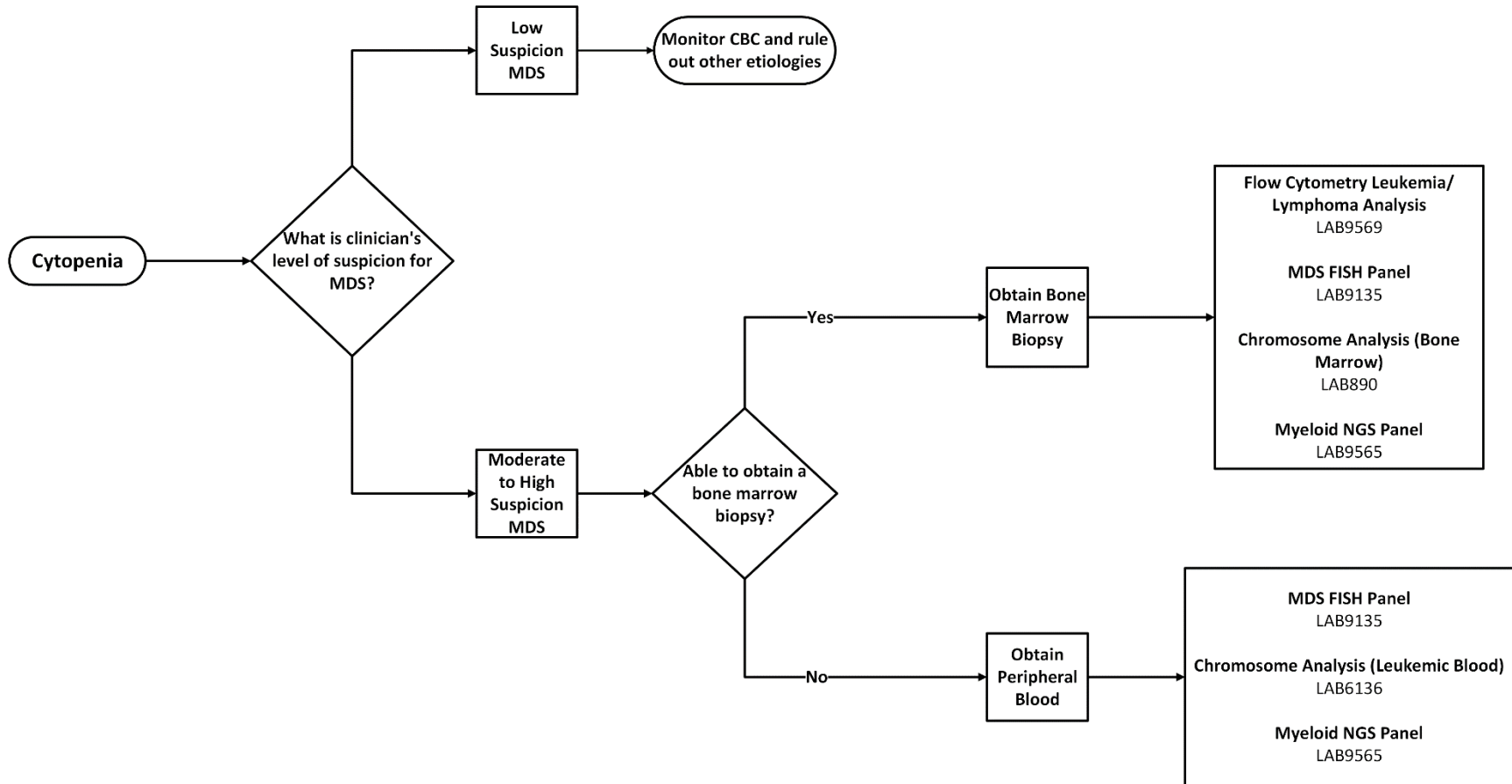
High suspicion of myeloproliferative disease, then go [here](#).

.

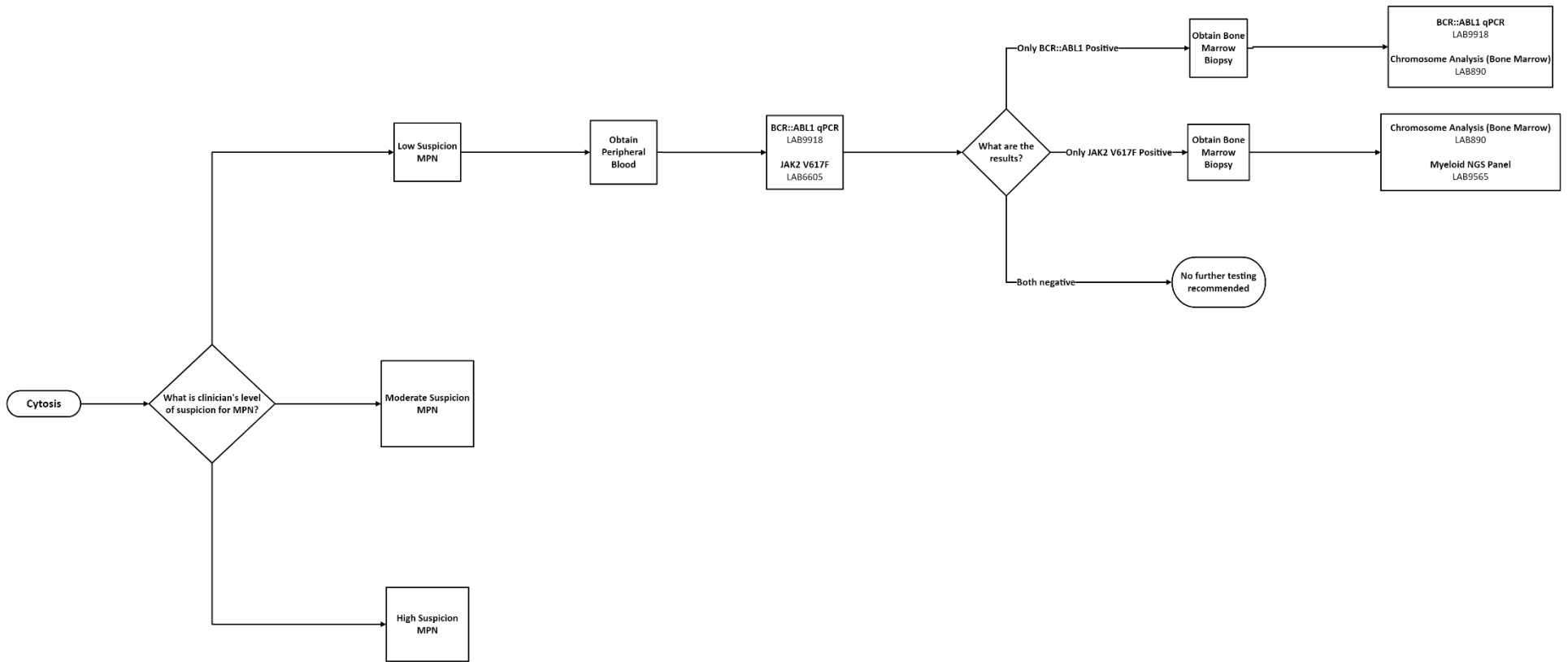
Blasts Algorithm



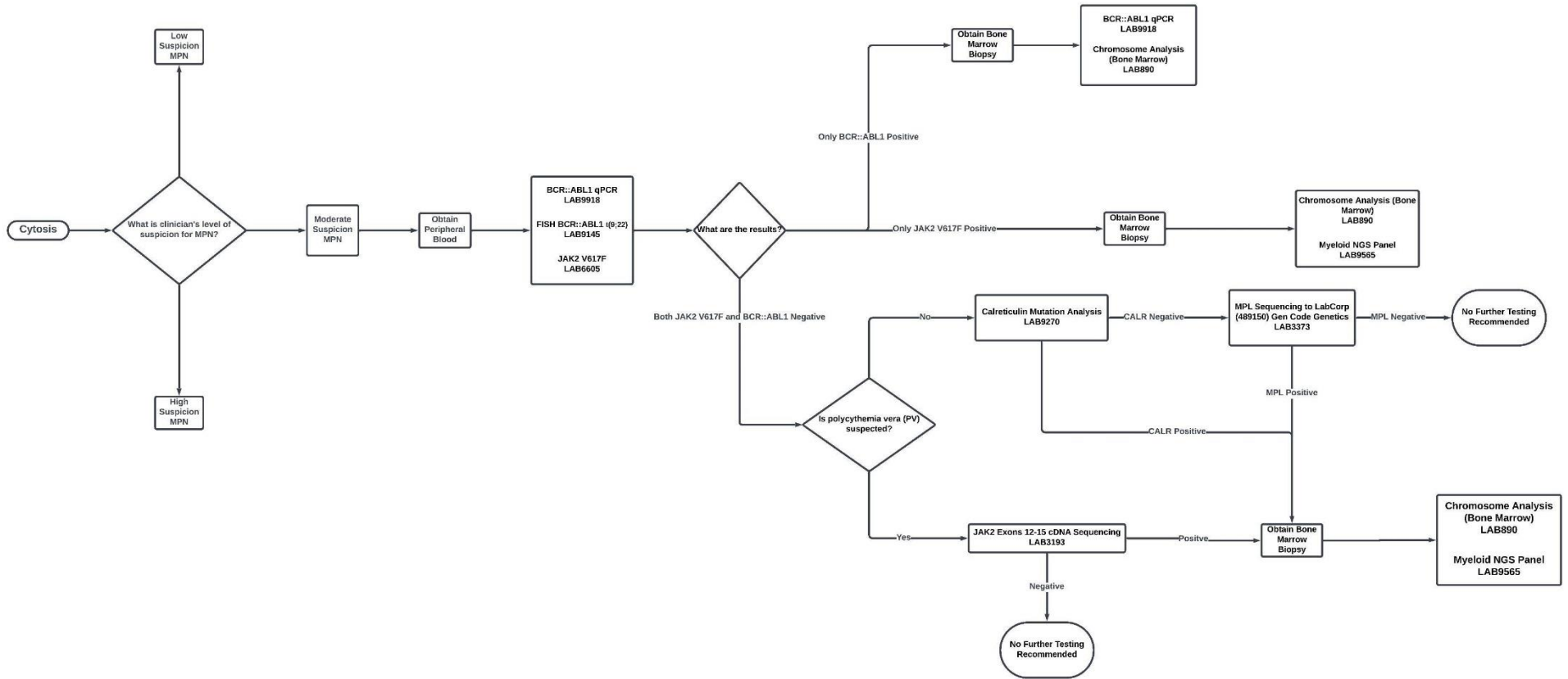
Cytopenia Algorithm



Cytosis with Low Suspicion MPN Algorithm



Cytosis with Moderate Suspicion MPN Algorithm



Cytosis with High Suspicion MPN Algorithm

